



ADD-A-DOG™

∴ SDF-CTR

OPERATING GUIDE
PLEASE READ THIS ENTIRE GUIDE BEFORE BEGINNING

Hereinafter Radio Systems Corporation, Radio Systems PetSafe Europe Ltd., Radio Systems Australia Pty Ltd. and any other affiliate or Brand of Radio Systems Corporation may be referred to collectively as "We" or "Us".

IMPORTANT SAFETY INFORMATION

Explanation Of Attention Words And Symbols Used In This Guide



This is the safety alert symbol. It is used to alert you to potential personal injury hazards. Obey all safety messages that follow this symbol to avoid possible injury or death.

⚠ WARNING **WARNING** indicates a hazardous situation which, if not avoided, could result in death or serious injury.

⚠ CAUTION **CAUTION**, used with the safety alert symbol, indicates a hazardous situation which, if not avoided, could result in minor or moderate injury.

⚠ CAUTION **CAUTION**, used without the safety alert symbol, indicates a hazardous situation which, if not avoided, could result in harm to your dog.

⚠ NOTICE **NOTICE** is used to address safe use practices not related to personal injury.

⚠ WARNING

- Don't use this product if your dog is aggressive or prone to aggressive behavior. Aggressive dogs can cause severe injury and even death to owners and others. If you're unsure whether this product is appropriate for your dog, please consult your veterinarian or a certified trainer.
- Underground cables can carry high voltage. Have all underground cables marked before you dig to bury the boundary wire. In most areas, it's a free service. Don't install, connect, or remove your system during a lightning storm. If the storm is close enough for you to hear thunder, it's close enough to create hazardous surges.
- To avoid risk of severe injury, follow all safety instructions for your power tools, and wear safety goggles during use.
- Before you begin installing the Boundary Wire, turn the Fence Transmitter OFF.
- To avoid electric shock, use the containment Transmitter indoors in a dry location only.
- DON'T attempt to cut into or pry open the battery. Be sure to discard any used battery properly.
- Never incinerate, puncture, deform, short-circuit or charge with an inappropriate charger. Fire, explosion, property damage, or bodily harm may occur if this warning is not followed.
- There is a risk of explosion if a battery is replaced by an incorrect type. Do not short circuit, mix old and new batteries, dispose of in fire, or expose to water. When batteries are stored or disposed, they must be protected from shorting.
- The battery should be charged in areas with temperatures ranging from 32°F to 113°F / 0°C to 45°C. Recharging the battery outside of this temperature range can cause the battery to overheat, explode, or catch fire.

⚠ CAUTION

- Wire on top of the ground may be a trip hazard. Be careful when placing wires and testing the system.
- This system is NOT a solid barrier. It's designed to act as a deterrent to remind dogs to remain within the established boundary by use of static stimulation. It's important that you reinforce training with your dog on a regular basis. Since the tolerance level to static stimulation varies from dog to dog, Radio Systems Corporation CANNOT guarantee that the system will, in all cases, keep a dog within the established boundary. Not all dogs can be trained to avoid crossing the boundary! Therefore, if you have reason to believe that your

dog may pose a danger to others or harm himself if he is not kept from crossing the boundary, you should NOT rely solely upon this system to confine your dog. Radio Systems Corporation shall NOT be liable for any property damage, economic loss, or any consequential damages sustained as a result of any animal crossing the boundary.

- It's vitally important that you and your dog remain safe during on-leash training. Your dog should be on a strong lead/leash, long enough for him to attempt to chase an object, but short enough for him not to reach a road or other hazard. You must be physically strong enough to restrain your dog if he tries to chase something.

⚠ CAUTION

- Proper fit of the collar is important. A collar worn for too long or made too tight on the dog's neck may cause skin damage ranging from redness to pressure ulcers. This condition is commonly known as bed sores.
- Avoid leaving the collar on a dog for more than 12 hours per day.
- When possible, reposition the collar on the dog's neck every 1 - 2 hours.
- Regularly recheck the fit to prevent excessive pressure; follow the instructions in this manual.
- You may need to trim the hair in the area of the Contact Points. However, never shave the dog's neck; this may lead to a rash or infection.
- Never connect a lead/leash to a collar with Contact Points. It will cause excessive pressure on the Contact Points.
- When connecting a lead/leash to a separate collar, don't allow it to put pressure on the Collar Receiver.
- Wash the dog's neck area and the Contact Points of the collar weekly with a damp cloth.
- Examine the contact area daily for signs of a rash or a sore.
- If a rash or sore is found, discontinue using this product until the skin has healed.
- If the condition persists beyond 48 hours, see your veterinarian.
- For additional information on bed sores and pressure necrosis, please visit www.sportdog.com.
- Proper training of your dog is essential to successfully using the system. During the first 2 weeks of training, don't use the system without direct supervision of your dog.
- Always remove your dog's Collar Receiver before performing any Transmitter testing or adjustments. This will prevent unintended corrections.
- To prevent an unintended correction, after the boundary markers have been placed and you are beginning your containment training, be sure to set the static stimulation level on the collar back to Level 1 (or tone/vibe), and only increase if necessary.
- The boundary width of the system must be tested whenever an adjustment is made to the Boundary Area to prevent unintended corrections to your dog. Don't use an outlet protected with a residual current device (RCD) or ground fault circuit interrupter (GFCI). The system will function properly, but in rare cases, nearby lightning strikes may cause the RCD or GFCI to trip. Without system power, your dog may escape. You'll have to reset the RCD or GFCI to restore power to the system.
- This product is only for use with healthy dogs. If you're not certain that your dog is in good health, we recommend that you take your dog to a veterinarian before using this product.

⚠ NOTICE

- Avoid damaging the insulation of the loop wire; damage may cause areas of weak signal and lead to failure of the boundary.
- When mowing or trimming your grass, use care not to cut the Boundary Wire.
- To protect the containment Transmitter, disconnect the Boundary Wire and unplug the power adapter from the outlet when the system will not be used for long periods of time or prior to thunderstorms. This will prevent power surges from damaging the Transmitter.
- Modification or changes to this equipment not expressly approved by Radio Systems Corporation may void the user's authority to operate the equipment.

Thank you for choosing SportDOG Brand™ products. Used properly, this product will help you contain + train your dog efficiently and safely. To ensure your satisfaction, please review this owner's manual thoroughly. If you have questions regarding this product's operation, please contact our Customer Care Center, visit our website at www.sportdog.com, or view our support videos at www.youtube.com/sportdogbrand.*

To get the most protection out of your 2 Year Warranty, please register your product within 30 days at www.sportdog.com. By registering, and keeping your receipt you will enjoy the product's full warranty and should you ever need to call the Customer Care Center, we will be able to help you faster. Most importantly, your valuable information will never be given or sold to anyone. Complete warranty information is available online at www.sportdog.com.

TABLE OF CONTENTS

HOW THE SYSTEM WORKS	5
PREPARE THE COLLAR RECEIVER	5
FIT THE COLLAR RECEIVER	9
FIND THE BEST INTENSITY LEVEL FOR YOUR DOG (TRAINING)	10
CHANGING STATIC STIMULATION RANGES (TRAINING)	11
PROGRAM THE REMOTE TRANSMITTER	11
MATCH THE COLLAR RECEIVER & REMOTE TRANSMITTER	12
PROGRAM THE SYSTEM FOR MULTI-DOG OPERATION	13
CHANGE ID CODES	13
TAKING YOUR DOG OUT OF THE BOUNDARY AREA	14
TERMS OF USE AND LIMITATION OF LIABILITY	15
BATTERY DISPOSAL	15
COMPLIANCE	16
CUSTOMER CARE INTERNATIONAL	16
WARRANTY	17

* **YouTube** videos available at www.youtube.com/sportdogbrand

HOW THE SYSTEM WORKS

The SportDOG Brand™ Contain + Train™ system has been proven safe, comfortable, and effective for dogs over 10 pounds. In **Containment** and **Contain + Train modes**, the system works by producing a radio signal from the Fence Transmitter through up to 8,600 feet of Boundary Wire. The Boundary Wire is buried or attached to a fixed object to enclose the dog's Boundary Area. You temporarily define the Boundary Area with Boundary Flags for a visual aid in training your dog. Your dog wears a Collar Receiver with Contact Points that touch his neck and, once trained, is allowed to roam freely in the Boundary Area. When your dog reaches the Warning Zone, the Collar Receiver gives a warning beep. If your dog continues into the Stimulation Zone, a safe stimulation will be delivered through the Contact Points to get his attention until he returns to the Boundary Area.

In **Training mode**, consistent, correct use of this product allows you to reinforce commands from up to 500 yards. The Remote Transmitter sends a signal, activating the Collar Receiver to deliver a stimulation. With proper training, a dog will learn to associate this signal with a command. Like all SportDOG™ products, this model features adjustable static stimulation levels so you can tailor the stimulation level to your dog's temperament, eliminating the risk of over-correction.

STEP :: 01

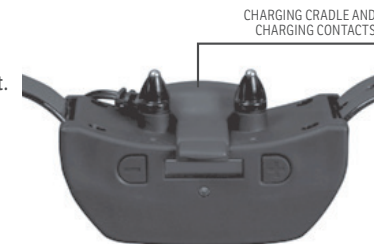
PREPARE THE COLLAR RECEIVER

CHARGE THE COLLAR RECEIVER

The Contain + Train™ Collar Receiver contains a rechargeable lithium-ion battery. When the unit indicates the battery is low (battery icon on OLED display shows 1 bar or less and Battery Indicator Light flashes red) it's time to recharge the unit. Average battery life is 168 hours in **Training** and **Contain + Train modes**, and 6 months in **Containment mode**.

FOLLOW THESE STEPS TO CHARGE THE BATTERY:

1. Align the Charging Cradle with the Charging Contacts as shown in image.
2. Push down on the Charging Cradle until it snaps into place.
3. Plug the charger into a standard 120/240-volt AC wall outlet. The unit will beep to indicate it's connected to the charger. While charging, a battery icon will show on the OLED display and the Battery Indicator Light will be solid red.
4. During charging, keep the Collar Receiver in an open, well-ventilated area.
5. When charging is complete the Indicator Light will turn solid green. The OLED screen will show 3 full bars on the battery icon for 15 seconds, after which the OLED screen will go blank. Using Li-Ion technology, the Collar Receiver only requires a 2 hour charge. It's not harmful to let the unit charge for more than 2 hours.
6. Remove the Charging Cradle from the Collar Receiver.
7. Unplug the charger from the wall outlet.



TO TURN THE COLLAR RECEIVER ON/OFF

Press and release the power button (located between the Contact Points) for about one second - the unit will power on immediately, as well as beep 1-3 times, depending on the static stimulation range setting (2 is the default setting). To turn the unit off, press and hold the power button for 3 seconds. A long beep will sound, then the unit will turn off.

NOTE: If the user does not press any button, the display will go blank after 15 seconds. To wake up the display, press and release the power button.

CHANGING THE MODES

The Contain + Train™ system has 3 modes of operation. These 3 modes are indicated by icons shown on the OLED display. The following table summarizes the modes and their corresponding icons:



When the display is active (on), press and release the power button. The mode icon will flash, indicating that you can change modes. Press the plus and minus buttons until the desired mode is selected.

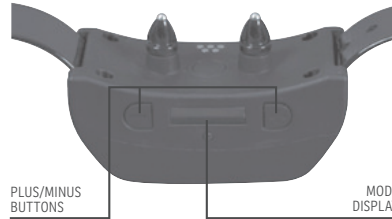
TO SET THE CORRECTION LEVEL

CHANGING THE STIMULATION (CONTAINMENT)

After changing modes, pressing and releasing the power button again while the mode is flashing will allow you to change the static stimulation levels for Containment, if you are in **Containment** or **Contain + Train** modes. Pressing the plus or minus buttons will cycle through the static stimulation levels (1-7). The music note 🎵 indicates tone/vibe (no static stimulation). Begin training with static stimulation Level 1 and only increase if your dog does not respond to the static stimulation.

CHANGING THE STIMULATION (TRAINING)

Static stimulation level, tone, and vibration are controlled by the Remote Transmitter when the unit is in **Training** and **Contain + Train** modes (See STEPS 3-4).



COLLAR RECEIVER INDICATOR LIGHT

OPERATIONAL MODE	LIGHT COLOR	BATTERY STATUS	LIGHT FUNCTION	SPEAKER FUNCTION	VIBRATION	DISPLAY
Unit is turned on via power button	Green	Good	Light is solid in color during beep sequence	Beeps 1-3 times depending on static stimulation range setting (2 is the default setting)	N/A	Unit will display the current battery level, mode setting, and containment stim level if Containment mode is enabled
Unit is turned on via power button	Orange	Medium	Light is solid in color during beep sequence			
Unit is turned on via power button	Red	Low	Light is solid in color during beep sequence			
Unit is turned off via power button	Red	N/A	Light is solid in color during beep sequence	Beeps continuously for 2 seconds	N/A	N/A
Unit is on	Green	Good	Light flashes every 4-5 seconds	N/A	N/A	N/A
Unit is on	Orange	Medium	Light flashes every 4-5 seconds	N/A	N/A	N/A
Unit is on	Red	Low	Light flashes every 4-5 seconds	N/A	N/A	N/A
Unit is on and the power button is pressed and released	Red	N/A	Light will quickly flash	N/A	N/A	Unit will display the current battery level, mode setting, and containment stim level if Containment mode is enabled. Use the power button to select a mode and use the "+" and "-" buttons to edit the settings.
Unit is delivering continuous training stimulation	Red	N/A	Light is solid in color for as long as button is pressed (up to 10 seconds)	N/A	N/A	N/A
Unit is delivering momentary training stimulation	Red	N/A	Light will quickly flash once no matter how long button is pressed	N/A	N/A	N/A

OPERATIONAL MODE	LIGHT COLOR	BATTERY STATUS	LIGHT FUNCTION	SPEAKER FUNCTION	VIBRATION	DISPLAY
Unit is delivering training tone	Off	N/A	N/A	Unit will beep for as long as button is pressed	N/A	N/A
Unit is delivering training vibration	Off	N/A	N/A	N/A	Unit will vibrate for as long as button is pressed (up to 10 seconds)	N/A
Unit is delivering a containment warning stimulation	Green	N/A	Light will slowly flash for 2 seconds	Unit will beep slowly for 2 seconds	Unit will vibrate intermittently for 2 seconds	N/A
Unit is delivering a containment anti-linger stimulation	Red	N/A	Light will quickly flash (up to 15 seconds)	Unit will beep quickly	N/A	N/A
Unit is delivering a containment run-through stimulation	Red	N/A	Light will quickly flash (up to 15 seconds)	Unit will beep quickly	N/A	N/A
Unit is charging	Red	Low	Light is solid in color while on the charger	Unit will beep to indicate it is connected to the charger	N/A	Unit will display an animated battery icon while charging
Unit is fully charged (charger still connected)	Green	Good	Light is solid in color when unit is fully charged	N/A	N/A	Unit will display a full battery icon for 15 seconds once charging is completed

RECHARGEABLE BATTERIES

⚠ WARNING

- This device contains lithium-ion batteries; never incinerate, puncture, deform, short-circuit, or charge with an inappropriate charger. Fire, explosion, property damage, or bodily harm may occur if this warning isn't followed.
- Risk of explosion if battery is replaced by an incorrect type. Dispose of used batteries according to the instructions on page 15.
- Batteries should never be removed from the battery compartment for charging.
- Risk of explosion if batteries are charged in areas with high temperature (113° F+ / 45° C+). Recharging the battery outside of this temperature range can cause the battery to overheat, explode, or catch fire.

- The rechargeable lithium-ion batteries are not memory sensitive, don't require depletion before charging, and can't be over charged.
- The batteries come partially charged from the factory, but will require a full charge before the first use.
- When storing the unit for long periods, remember to regularly give batteries a full charge. This should be done once every 3-4 months.**
- You should expect hundreds of recharge cycles from your batteries. However, all rechargeable batteries lose capacity over time relative to the number of recharge cycles they experience. This is normal. If your operating time drops to half of the original life, contact the Customer Care Center to purchase a new battery.
- The batteries should last for a period of 3-5 years. When a battery needs replacement, you can order a new pack by calling our Customer Care Center. Please don't open the Collar Receiver or Remote Transmitter until you have received the replacement.

STEP :: 02

FIT THE COLLAR RECEIVER

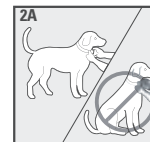
IMPORTANT: The proper fit and placement of the Contain + Train™ Collar Receiver is important for effective operation. The Contact Points must have direct contact with your dog's skin.

CAUTION

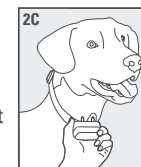
See page 3 for Important Safety Information.

TO ENSURE A PROPER FIT, FOLLOW THESE STEPS:

- Make sure the unit is off.
- With your dog standing (2A), center the Collar Receiver so the Contact Points are underneath your dog's neck, touching the skin (2B). If your dog has a long or thick coat, you have 2 options to ensure consistent contact: either trim the hair around the Contact Points or switch to the longer Contact Points included with your system.



- NOTE: When switching to the longer Contact Points, ensure the o-rings are attached.*
- Check the tightness of the collar by inserting your finger between the end of a Contact Point and your dog's neck (2C). The fit should be snug but not constricting.
 - Allow your dog to wear the collar for several minutes and then recheck the fit. Check the fit again as your dog becomes more comfortable wearing the collar.



CAUTION

- You may need to trim the hair in the area of the Contact Points. Never shave the dog's neck; this may lead to a rash or infection.
- You shouldn't make the collar any tighter than is required for good contact. A collar that is too tight will increase the risk of pressure necrosis in the contact area.

STEP :: 03

FIND THE BEST INTENSITY LEVEL FOR YOUR DOG (TRAINING)

The Contain + Train™ system has multiple intensity levels. This allows you to choose the static stimulation that is best for your dog.

NOTE: Always start at the lowest level and work your way up.

For training efficiency, it's important to find the right intensity level for your dog. This is called the Recognition Level, at which your dog looks around in curiosity or flicks his ears.

FINDING YOUR DOG'S RECOGNITION LEVEL:

NOTE: Every dog is different and you can't predict where your dog's Recognition Level will be. Watch closely for any slight change in behavior that demonstrates your dog is feeling the static stimulation.

1. With the Collar Receiver turned on, in **Training** mode, and properly fit to your dog, set the Remote Transmitter's Intensity Dial at Level 1 and press the Continuous Static Stimulation Button for 1-2 seconds.
2. If your dog shows no reaction to Level 1, go to Level 2 and repeat the process.
3. **YOUR DOG SHOULDN'T VOCALIZE OR PANIC WHEN RECEIVING STATIC STIMULATION. IF THIS HAPPENS, THE STIMULATION LEVEL IS TOO HIGH AND YOU NEED TO GO BACK TO THE PREVIOUS LEVEL AND REPEAT THE PROCESS.**
4. Once you find your dog's Recognition Level, this is the level you should use when you begin a training exercise.
5. If you've progressed to Level 7 while searching for your dog's Recognition Level and your dog continues to show no response, check to see if the Collar Receiver is snug against your dog's neck. Then go back to Intensity Level 1 and repeat the process. If your dog still doesn't indicate he's feeling the static stimulation, you have 3 options: trim the hair beneath the Contact Points, switch to the longer Contact Points included in your system, or increase the static stimulation range.

If after completing all of these steps your dog still doesn't indicate he is feeling the static stimulation, please contact the Customer Care Center.

CHANGING STATIC STIMULATION RANGES (TRAINING)

When in **Training** and **Contain + Train** modes, the Contain + Train™ Collar Receiver has 3 static stimulation ranges - low, medium, and high. There are 7 static stimulation levels within each range, with 1 being the lowest and 7 being the highest. The default range setting is 2 (medium).

TO CHANGE THE RANGE OF STATIC STIMULATION, FOLLOW THESE STEPS:

1. Make sure the Collar Receiver is off.
2. Then turn the unit on by pressing and releasing the power button.
3. After the Indicator Light turns off and within 5 seconds, press and hold the power button for 3 seconds.
4. If the Collar Receiver beeps once, this indicates **Low** static stimulation range. If **Medium** or **High** are desired, continue to hold the power button until the number of beeps equals the desired static stimulation range shown in the chart below.
5. Release the power button once the desired range is selected; the Collar Receiver will turn off.
6. Turn the unit back on. It will then beep according to the static stimulation range selected in Step 4.

	STATIC STIMULATION RANGE	DOG TEMPERAMENT
1 beep	Low	Mild
2 beeps	Medium	Moderate
3 beeps	High	Stubborn

STEP :: 04

PROGRAM THE REMOTE TRANSMITTER

The Contain + Train™ Remote Transmitter has seven operational modes to allow you to select the best match for your type or style of training. The Remote Transmitter is factory set to mode 1. There's also one programming mode: Mode V/T (see Change ID Codes on page 13).

TO CHANGE THE MODE:

1. Referring to the table on the following page, adjust the Intensity Dial to your desired mode.
2. Turn the Remote Transmitter over.
3. Using a pen or the tine on the buckle of your collar strap, press and release the Mode Button. When the Mode Button is pressed, the Transmitter Indicator Light will be solid in color. When it's released, it will flash the number of times for the mode selected.



For example, if mode 5 is desired, adjust the Intensity Dial to 5. Once the Mode Button has been depressed, the Transmitter Indicator Light will be solid and, once the Mode Button is released, the Transmitter Indicator Light will flash 5 times.

MODE	UPPER BUTTON FUNCTION	LOWER BUTTON FUNCTION	SIDE BUTTON FUNCTION	NUMBER OF DOGS
1*	Continuous stimulation (Level set by Intensity Dial) OR Vibe if V/T on dial	Momentary stimulation (Level set by Intensity Dial) OR Vibe if V/T on dial	Tone only	1
2	Continuous stimulation (Level set by Intensity Dial) OR Tone if V/T on dial	Momentary stimulation (Level set by Intensity Dial) OR Tone if V/T on dial	Vibe only	1
3	Dog 1: Continuous stimulation (Level set by Intensity Dial) OR Tone if V/T on dial	Dog 2: Continuous stimulation (Level set by Intensity Dial) OR Tone if V/T on dial	Dog 3: Continuous stimulation (Level set by Intensity Dial) OR Tone if V/T on dial	3
4	Dog 1: Continuous stimulation (Level set by Intensity Dial) OR Vibe if V/T on dial	Dog 2: Continuous stimulation (Level set by Intensity Dial) OR Vibe if V/T on dial	Dog 3: Continuous stimulation (Level set by Intensity Dial) OR Vibe if V/T on dial	3
5	Continuous stimulation (Level set by Intensity Dial) OR Tone if V/T on dial	Momentary stimulation (Level set by Intensity Dial) OR Tone if V/T on dial	N/A	1
6	Continuous stimulation (Level set by Intensity Dial) OR Vibe if V/T on dial	Momentary stimulation (Level set by Intensity Dial) OR Vibe if V/T on dial	N/A	1
7	Continuous stimulation (Level set by Intensity Dial) OR Tone if V/T on dial	Momentary stimulation (Level set by Intensity Dial) OR Tone if V/T on dial	Locate Remote Beeper**	1
V/T (ID CODE)	N/A	N/A	(See STEP 7)	N/A

* Factory default mode.

** Locate Remote Beeper: The Side Button turns run mode off and locates the Remote Beeper. To enable run mode again, press and hold the Side Button for 3 seconds.

STEP :: 05

MATCH THE COLLAR RECEIVER AND REMOTE TRANSMITTER

To match the Collar Receiver to work with a new Remote Transmitter or to match a new Collar Receiver to work with your existing Remote Transmitter:

1. Turn the Collar Receiver off.
2. Press and hold the power button. After the Receiver Indicator Light and the OLED Display have turned off, release the power button.
3. Press and hold the Upper Button on the Remote Transmitter until the Receiver Indicator Light flashes 5 times. Once the Receiver Indicator Light has flashed 5 times, the Collar Receiver has been matched and will begin flashing as normal. If the Receiver Indicator Light doesn't flash 5 times, start over from 1.

*Note: Your Collar Receiver will need to be in either **Training** or **Contain + Train** modes.*

STEP :: 06

PROGRAM THE SYSTEM FOR MULTI-DOG OPERATION

SportDOG Brand™ Add-A-Dog™ Collar Receiver(s) must be purchased to train additional dogs (up to 3).

*Note: Your Collar Receiver will need to be in either **Training** or **Contain + Train** modes.*

1. Program the Remote Transmitter to mode 3 or 4 (see page 12).
2. Program the first Collar Receiver.
 - A. Turn the Collar Receiver off.
 - B. Press and hold the power button. After the Receiver Indicator Light and the OLED Display have turned off, release the power button.
 - C. Press and hold the Upper Button on the Remote Transmitter until the Receiver Indicator Light flashes 5 times. If the Receiver Indicator Light doesn't flash 5 times, start over from A.
3. Program the second Collar Receiver using A through C above, but using the Lower Button in place of the Upper Button.
4. Program the third Collar Receiver using A through C above, but using the Side Button in place of the Upper Button.

STEP :: 07

CHANGE ID CODES

An ID Code is the signal identification between the Remote Transmitter and Collar Receiver. Each is programmed in 1 of 2,000 ID Codes from the factory. The Contain + Train™ system has the flexibility to program two or more Remote Transmitters to the same ID Code, allowing them to both control one Collar Receiver. There are 64 programmable ID Codes available.

TO MANUALLY PROGRAM A REMOTE TRANSMITTER'S ID CODE FOLLOW THESE STEPS:

1. Turn the Intensity Dial to V/T, and then press and release the Mode Button on the back of your Remote Transmitter. This doesn't change the mode, so the current mode will still be active after the ID change is complete.
2. Once the Mode Button is released, the Transmitter Indicator Light will illuminate solid green and stay on for 15 seconds.
3. While the green Indicator Light is on, turn the Intensity Dial to select the 1st digit of the ID and then press and release the Side Button. The green Indicator Light will flash rapidly confirming selection.
4. Again, while the green Indicator Light is on, turn the Intensity Dial to select the 2nd digit of the ID and then press and release the Side Button. The green Indicator Light will flash rapidly confirming selection. The 2nd digit is optional and, if not desired, wait until the green light turns off and refrain from pressing the Side Button.
5. At the end of 15 seconds, or after the second press of the Side Button, the green Indicator Light will turn off and the ID of the unit will be updated. At this point, the unit will be in the same mode it was in prior to setting the ID.
6. Upon changing the ID Code, you'll need to match the Collar Receiver to the Remote Transmitter (see STEP 5 on page 12).

TO RETURN THE UNIT TO THE FACTORY ID FOLLOW THESE STEPS:

1. Turn the Intensity Dial to V/T, and then press and release the Mode Button on the back of your Remote Transmitter. This doesn't change the mode, so the current mode will still be active after the ID change is complete.
2. Don't press any buttons and wait until the green Transmitter Indicator Light turns off.
3. You'll need to match the Collar Receiver to the Remote Transmitter (see STEP 5 on page 12).

TAKING YOUR DOG OUT OF THE BOUNDARY AREA

IMPORTANT: Remove the Collar Receiver from your dog.

Option 1: Replace the Collar Receiver with a regular collar. Put your dog in a car that's within the Boundary Area and drive him out of the Boundary Area.

Option 2: Replace the Collar Receiver with a regular collar and lead/leash. Walk your dog out of the Boundary Area while giving a command such as "OK" at a specific place of the Boundary Area (the end of your driveway, sidewalk, etc.). Always leave the Boundary Area with a lead/leash at this place and your dog will associate leaving the Boundary Area only on a lead/leash, only at this place, and only with a person. You may initially need to convince your dog to leave the Boundary Area with a food treat and lots of praise. You may also carry your dog out of the Boundary Area.

Option 3: Put the Collar Receiver in Training mode.



TERMS OF USE AND LIMITATION OF LIABILITY

1. TERMS OF USE

This Product is offered to you conditioned upon your acceptance without modification of the terms, conditions, and notices contained herein. Usage of this Product implies acceptance of all such terms, conditions, and notices.

2. PROPER USE

This Product is designed for use with dogs where training is desired. The specific temperament of your dog may not work with this Product. We recommend that you not use this Product if your dog is less than 10 pounds or if your dog is aggressive. If you're unsure whether this is appropriate for your dog, please consult your veterinarian, certified trainer, or contact our Customer Care Center. Proper use includes reviewing the entire Operating Guide provided with your Product and any specific safety information.

3. NO UNLAWFUL OR PROHIBITED USE

This Product is designed for use with dogs only. This dog training device isn't intended to harm, injure, or provoke. Using this Product in a way that is not intended could result in violation of Federal, State, or local laws.

4. LIMITATION OF LIABILITY

In no event shall Radio Systems Corporation be liable for any direct, indirect, punitive, incidental, special or consequential damages, or any damages whatsoever arising out of or connected with the use or misuse of this Product. Buyer assumes all risks and liability from the use of this Product.

5. MODIFICATION OF TERMS AND CONDITIONS

Radio Systems Corporation reserves the right to change the terms, conditions, and notices under which this Product is offered.

BATTERY DISPOSAL

This system operates on 2 lithium-ion battery packs (950mAh capacity for the Collar Receiver and 200mAh capacity for the Remote Transmitter). Only replace with battery received from calling the Customer Care Center.

Separate collection of spent batteries is required in many regions; check the regulations in your area before discarding spent batteries. Please see below for instructions on how to remove the battery from the product for separate disposal. If you wish to ship us your spent batteries for disposal, contact the Customer Care Center.

At end of product life, use these battery-removal instructions for final disposal (don't open the Collar Receiver or Remote Transmitter until you've received the replacement):

- Using a #1 Phillips screwdriver for your Remote Transmitter and/or a 3/32 Allen wrench for your Collar Receiver, remove the case screws.
- Remove the case back or cover.
- Remove the old battery pack

⚠ WARNING

- When removing the old battery pack, care must be taken when gripping the connector firmly to avoid damaging the wires. Shorting the battery wires may cause fire or explosion.
- These instructions aren't valid for repair or battery replacement. Replacing the battery with a battery not specifically approved by Radio Systems Corporation may cause fire or explosion. Please call the Customer Care Center to avoid invalidating your warranty.

COMPLIANCE

FCC: USA

This device complies with part 15 of the FCC Rules. Operation is subject to the following two conditions: (1) This device may not cause harmful interference, and (2) this device must accept any interference received, including interference that may cause undesired operation.

This equipment has been tested and found to comply with the limits for a Class B digital device, pursuant to part 15 of the FCC Rules. These limits are designed to provide reasonable protection against harmful interference in a residential installation. This equipment generates, uses, and can radiate radio frequency energy and, if not installed and used in accordance with the instructions, may cause harmful interference to radio communications. However, there is no guarantee that interference will not occur in a specific installation. If interference does occur to radio or television reception, which can be determined by turning the equipment off and on, the user is encouraged to try to correct the interference by one or more of the following measures:

- Reorient or relocate the receiving antenna.
- Increase the separation between the equipment and the receiver.
- Connect the equipment to an outlet on a circuit different from that to which the receiver is connected.
- Consult Customer Care, the dealer, or an experienced radio/TV technician for help.

NOTICE Modification or changes to this equipment not expressly approved by Radio Systems Corporation may void the user's authority to operate the equipment.

IC: CANADA

This device complies with Industry Canada license-exempt RSS standard(s). Operation is subject to the following two conditions: (1) this device may not cause interference, and (2) this device must accept any interference, including interference that may cause undesired operation of the device.

Le présent appareil est conforme aux CNR d'Industrie Canada applicables aux appareils radio exempts de licence. L'exploitation est autorisée aux deux conditions suivantes : (1) l'appareil ne doit pas produire de brouillage, et (2) l'utilisateur de l'appareil doit accepter tout brouillage radioélectrique subi, même si le brouillage est susceptible d'en compromettre le fonctionnement.

ACMA: AUSTRALIA

This device complies with the applicable EMC requirements specified by the ACMA (Australian Communications and Media Authority).

CUSTOMER CARE INTERNATIONAL

Canada - Tel: 800-457-3911
Monday - Friday 08:00 - 20:00 / Saturday 09:00 AM - 17:00 PM

Australia - Tel: 1800 786 608
Monday - Friday 8:30 - 17:00 (AEST)

New Zealand - Tel: 0800 543 054
Monday - Friday 10:30 AM - 19:00 (NZST)

TWO YEAR NON-TRANSFERRABLE LIMITED WARRANTY

This Product has the benefit of a limited manufacturer's warranty. Complete details of the warranty applicable to this Product and its terms can be found at www.sportdog.com and/or are available by contacting your local Customer Care Centre.

Canada – Radio Systems Corporation, 10427 PetSafe Way, Knoxville, TN 37932 USA

Australia/New Zealand – In compliance with the Australian Consumer Law, Warranties Against Defects, effective January 1, 2012, warranty details of this Product are as follows: Radio Systems Australia Pty Ltd. (hereinafter referred to as "Radio Systems") warrants to the original retail purchaser, and not any other purchaser or subsequent owner, that its Product, when subject to normal and proper residential use, will be free from defects in material or workmanship for a period of two (2) years from the purchase date. An "original retail consumer purchaser" is a person or entity who originally purchases the Product, or a gift recipient of a new Product that is unopened and in its original packaging. When serviced by Radio Systems Customer Service, Radio Systems covers labour and parts for the first two years of ownership; after the first two years, a service or upgrade charge will apply relative to replacement of the Product with new or refurbished items at Radio Systems' sole discretion.

The limited warranty is non-transferrable and shall automatically terminate if the original retail consumer purchaser resells the Radio Systems Product or transfers the property on which the Radio Systems Product is installed. This Limited Warranty excludes accidental damage due to dog chews; lightning damage; or neglect, alteration, and misuse. Consumers who purchase products outside of Australia, New Zealand, or from an unauthorized dealer will need to return the Product to the original place of purchase for any warranty issues.

Please note that Radio Systems does not provide refunds, replacements, or upgrades for change of mind, or for any other reason outside of these Warranty terms.

Claims Procedure: Any claim made under this Warranty should be made directly to Radio Systems Australia Pty Ltd. Customer Care Centre at:

Radio Systems Australia Pty Ltd.
PO Box 7266, Gold Coast Mail Centre QLD 9726, Australia
Australia Residents: 1800 786 608
New Zealand Residents: 0800 543 054
Email: aus-info@petsafe.net

To file a claim, a proof of purchase must be provided. Without a proof of purchase, Radio Systems will not repair or replace faulty components. Radio Systems requests the Consumer to contact the Radio Systems Customer Care Centre to obtain a Warranty Return number, prior to sending the Product. Failure to do so may delay in the repair or replacement of the Product.

If the Product is deemed to be faulty within 30 days from date of original purchase, Radio Systems will organise for a replacement to be sent in advance of returning the faulty Product. A Post Bag will be included with the replacement Product for the return of the faulty Product. The Product must be returned within 7 days of receiving the replacement. If the Product is deemed to be faulty after 30 days from the date of original purchase, the consumer will be required to return the Product to Radio Systems at the consumer's own expense. Radio Systems will test and replace the faulty unit or its components and return to the consumer free of charge, provided the Product is within its said warranty period. This warranty is in addition to other rights and remedies available to you under the law. Radio Systems goods come with guarantees that cannot be excluded under the Australia Consumer Law. You are entitled to a replacement or refund for a major failure and for compensation for any other reasonably foreseeable loss or damage. You are also entitled to have the goods repaired or replaced if the goods fail to be of acceptable quality and the failure does not amount to a major failure.

Should you have any queries or require any further information, please contact our Customer Care Centre on 1800 786 608 (Australia) or 0800 543 054 (New Zealand).



**GEAR THE WAY
YOU'D DESIGN IT**

SPORTDOG.COM

©2017 RADIO SYSTEMS CORPORATION
Radio Systems Corporation • 10427 PetSafe Way • Knoxville, TN 37932 • 1-800-732-0144
J400-2139