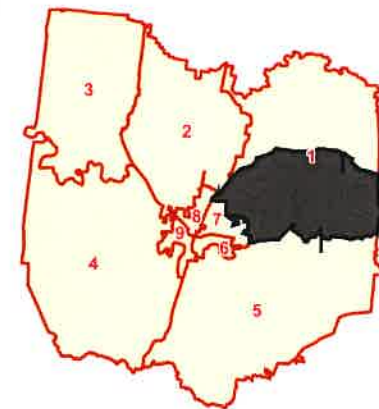


## Bedford County

101 Wartrace Baptist Church  
Voting Precinct

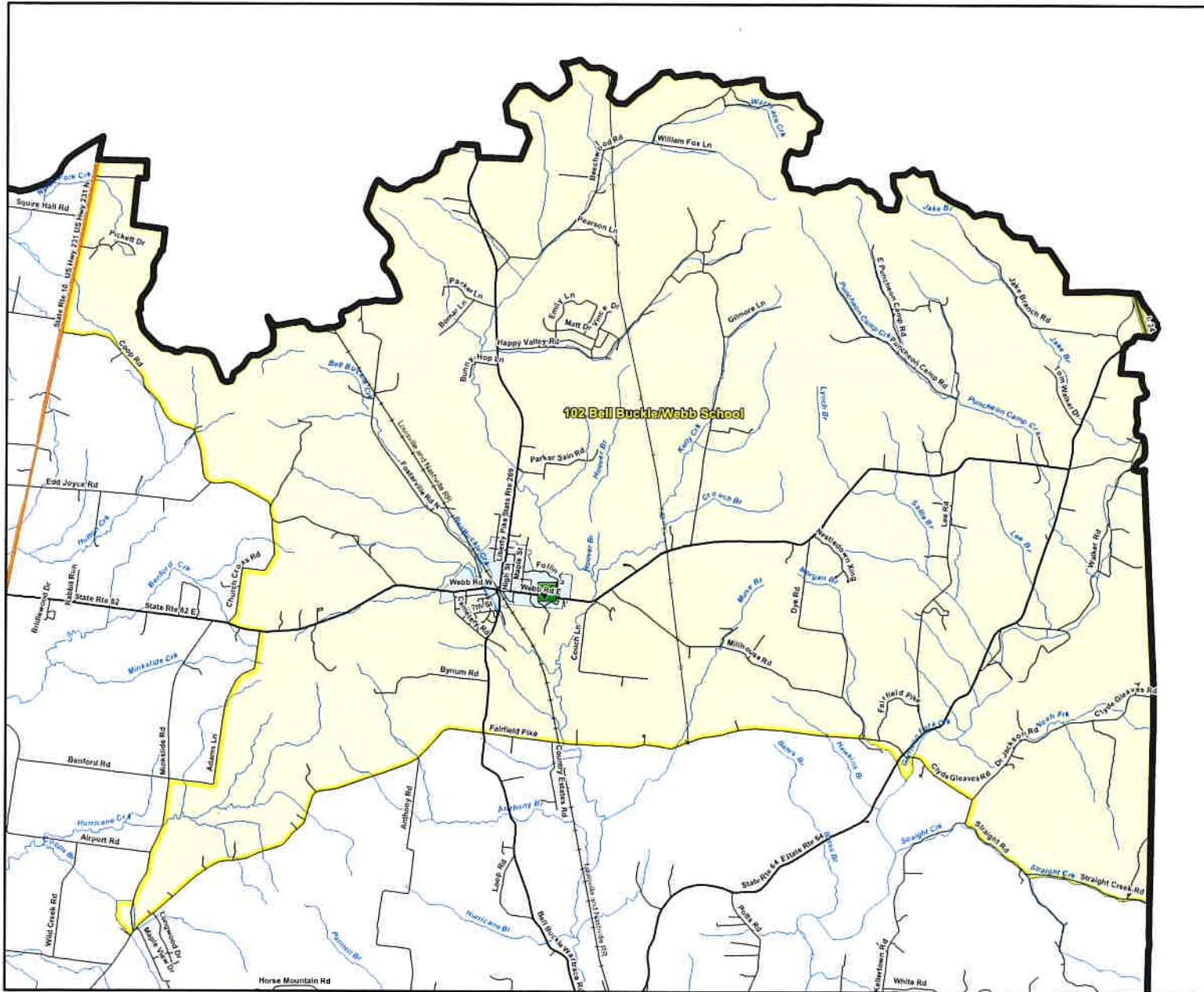
TOTAL POPULATION	3,043
WHITE POPULATION	2,638
% WHITE	86.7%
BLACK POPULATION	115
% BLACK	3.8%
OTHER POPULATION	290
% OTHER	9.5%
HISPANIC POPULATION	163
% HISPANIC	5.4%
TOTAL POPULATION 18	2,329

-  Polling Place
-  Interstate
-  U.S. Highway
-  State Highway
-  Local Roads
-  Railroads
-  Stream
-  Powerline (incomplete)
- City, Town**
-  City, Town
-  County



**TENNESSEE**  
**COMPTROLLER**  
**OF THE TREASURY**

Created On: 3/8/2022



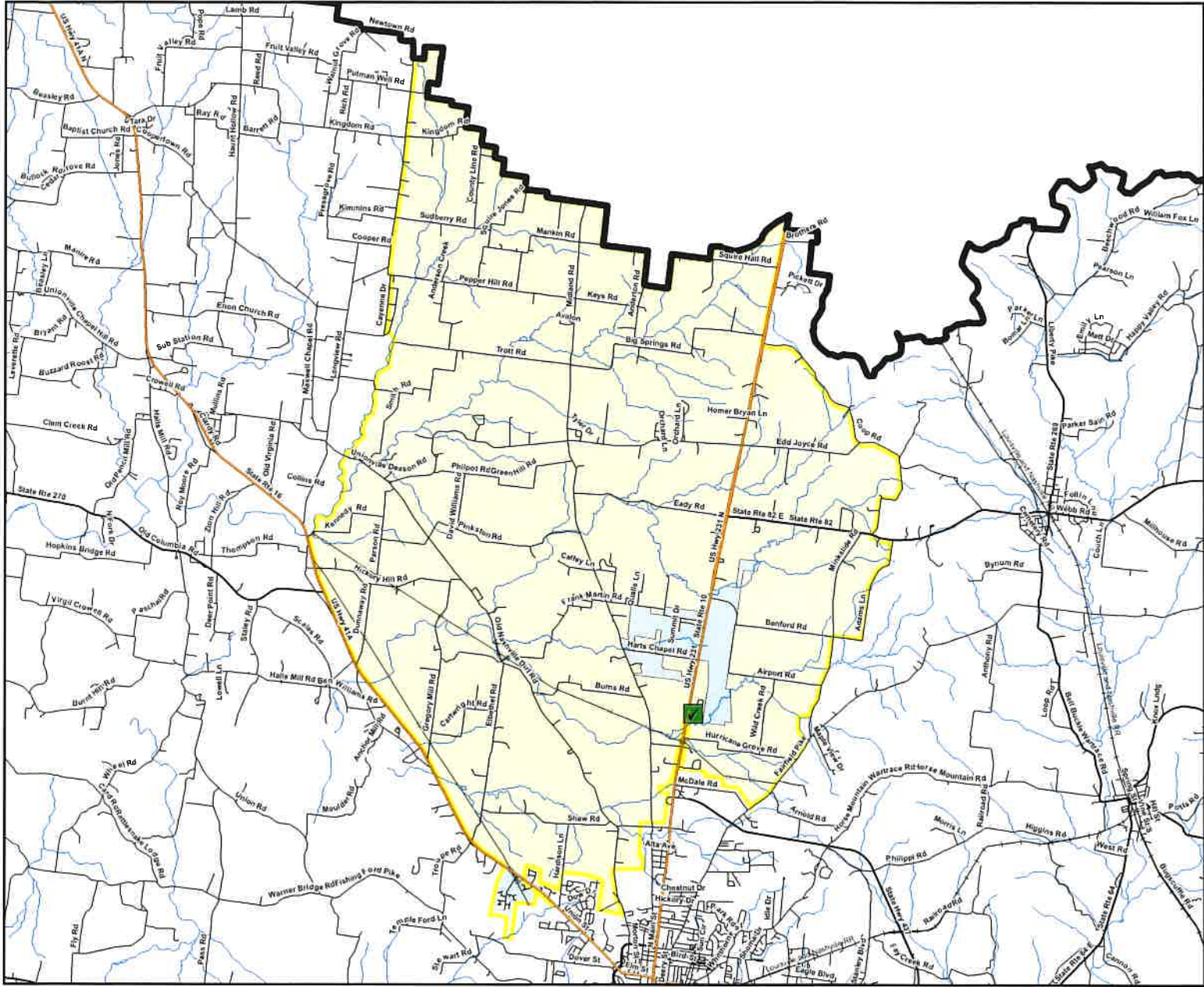
## Bedford County

102 Bell Buckle/Webb School  
Voting Precinct

TOTAL POPULATION	2,355
WHITE POPULATION	2,122
% WHITE	90.1%
BLACK POPULATION	41
% BLACK	1.7%
OTHER POPULATION	192
% OTHER	8.2%
HISPANIC POPULATION	81
% HISPANIC	3.4%
TOTAL POPULATION 18	1,815

- Polling Place
- Interstate
- U.S. Highway
- State Highway
- Local Roads
- Railroads
- Stream
- Powerline (Incomplete)
- City, Town
- City, Town
- County





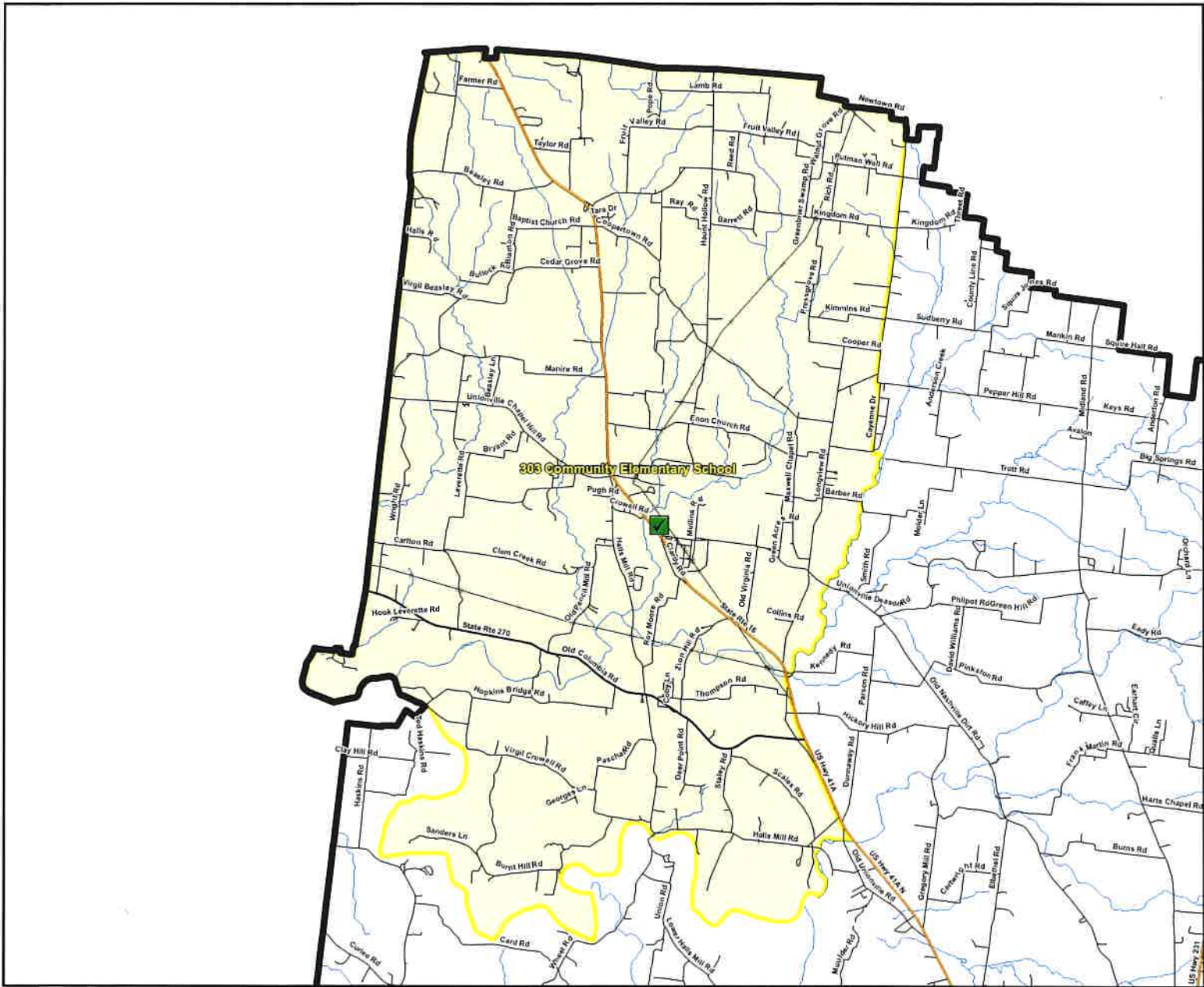
## Bedford County

### 203 First Assembly of God voting Precinct

TOTAL POPULATION	5,713
WHITE POPULATION	4,925
% WHITE	86.2%
BLACK POPULATION	207
% BLACK	3.6%
OTHER POPULATION	581
% OTHER	10.2%
HISPANIC POPULATION	385
% HISPANIC	6.7%
TOTAL POPULATION 18	4,442

- Polling Place
- Interstates
- U.S. Highway
- State Highway
- Local Roads
- Railroads
- Stream
- Powerline (Incomplete)
- City, Town**
- City, Town
- County





## Bedford County

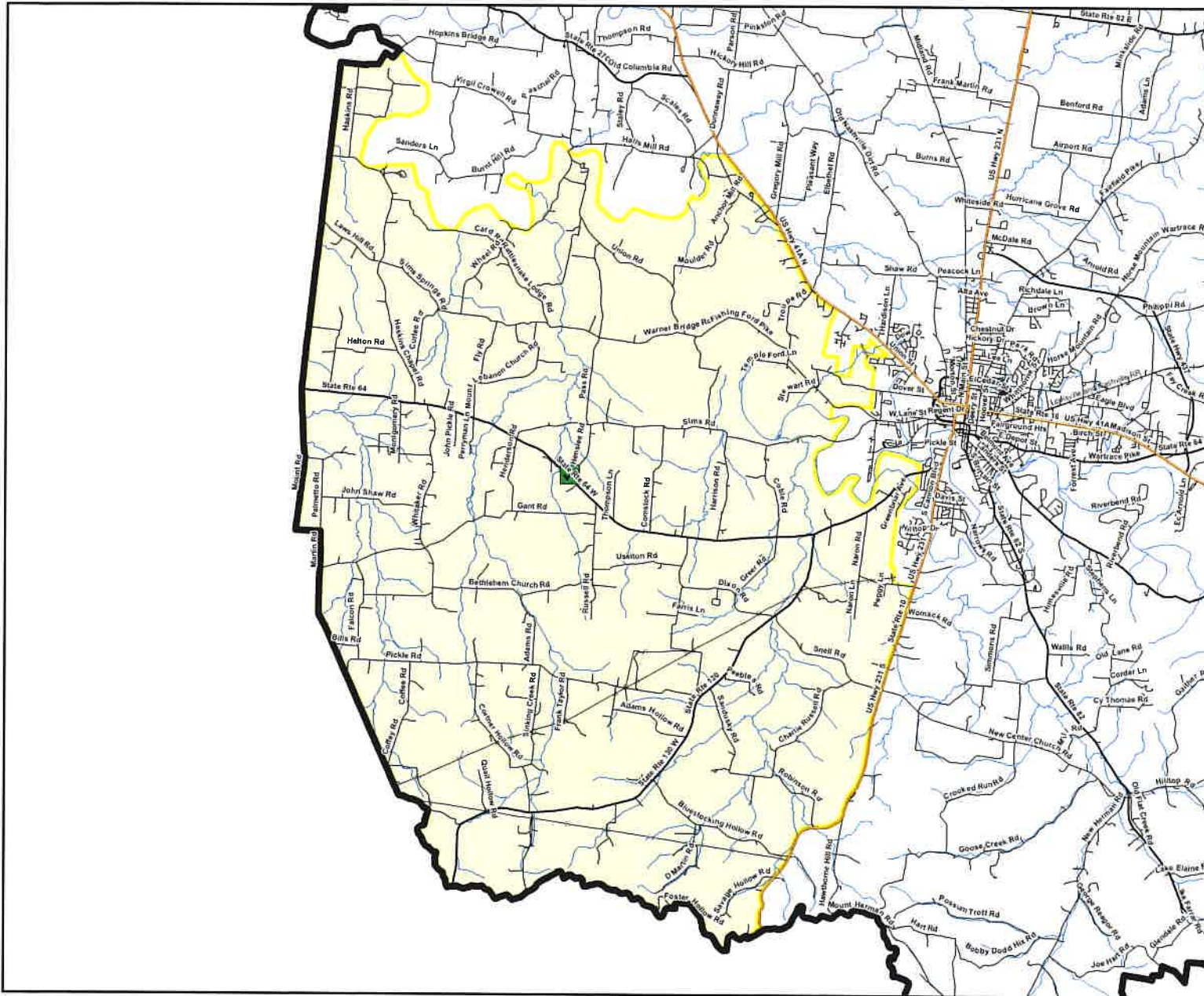
303 Community Elementary School  
Voting Precinct

TOTAL POPULATION	5,371
WHITE POPULATION	4,903
% WHITE	91.3%
BLACK POPULATION	90
% BLACK	1.7%
OTHER POPULATION	378
% OTHER	7%
HISPANIC POPULATION	258
% HISPANIC	4.8%
TOTAL POPULATION 18	4,076

- Polling Place
- Interstates
- U.S. Highway
- State Highway
- Local Roads
- Railroads
- Stream
- Powerline (Incomplete)
- City, Town
- City, Town
- County








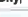
Created On: 3/8/2022



## Bedford County

403 Bedford Community Center  
Voting Precinct

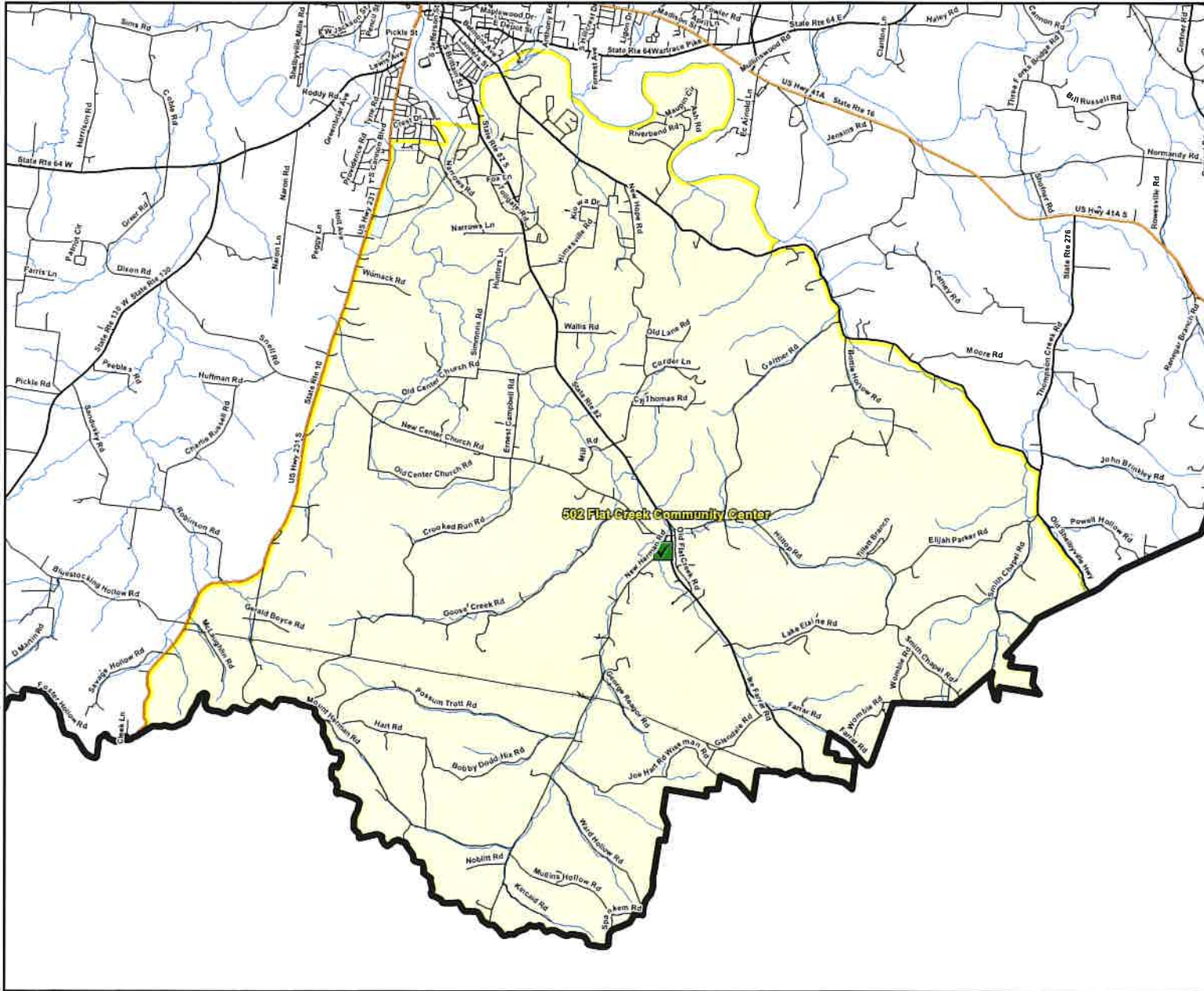
TOTAL POPULATION	5,649
WHITE POPULATION	4,943
% WHITE	87.5%
BLACK POPULATION	172
% BLACK	3%
OTHER POPULATION	534
% OTHER	9.5%
HISPANIC POPULATION	426
% HISPANIC	7.5%
TOTAL POPULATION 18	4,418

-  Polling Place
-  Interstates
-  U.S. Highway
-  State Highway
-  Local Roads
-  Railroads
-  Stream
-  Powerline (Incomplete)
- City, Town**
-  City, Town
-  County



**TENNESSEE**  
**COMPTROLLER**  
**OF THE TREASURY**

Created On: 3/8/2022



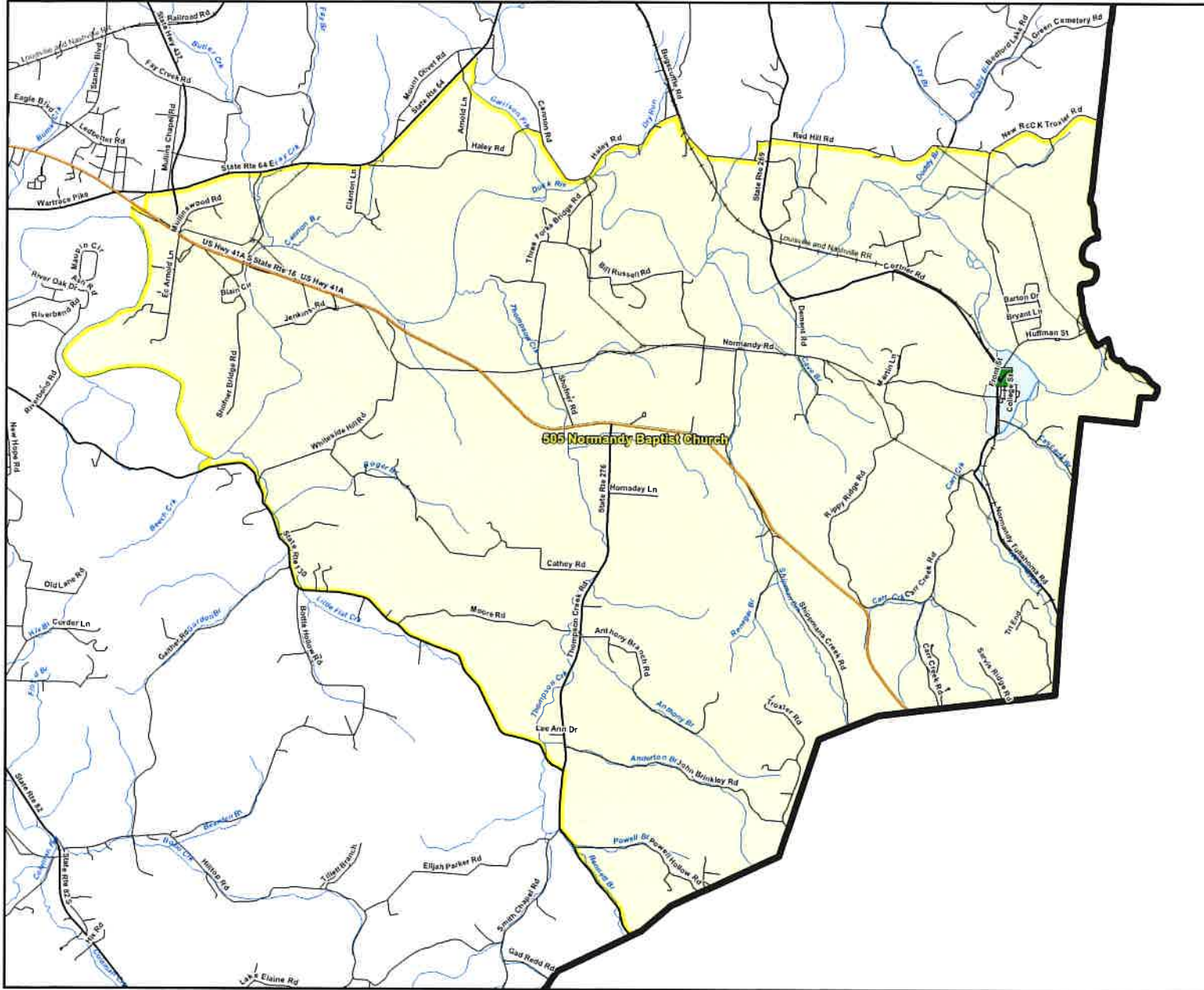
## Bedford County

### 502 Flat Creek Community Center Voting Precinct

TOTAL POPULATION	3,472
WHITE POPULATION	3,157
% WHITE	90.9%
BLACK POPULATION	59
% BLACK	1.7%
OTHER POPULATION	256
% OTHER	7.4%
HISPANIC POPULATION	171
% HISPANIC	4.9%
TOTAL POPULATION 18	2,740

-  Polling Place
-  Interstate
-  U.S. Highway
-  State Highway
-  Local Roads
-  Railroads
-  Stream
-  Powerline (Incomplete)
- City, Town
-  City, Town
-  County





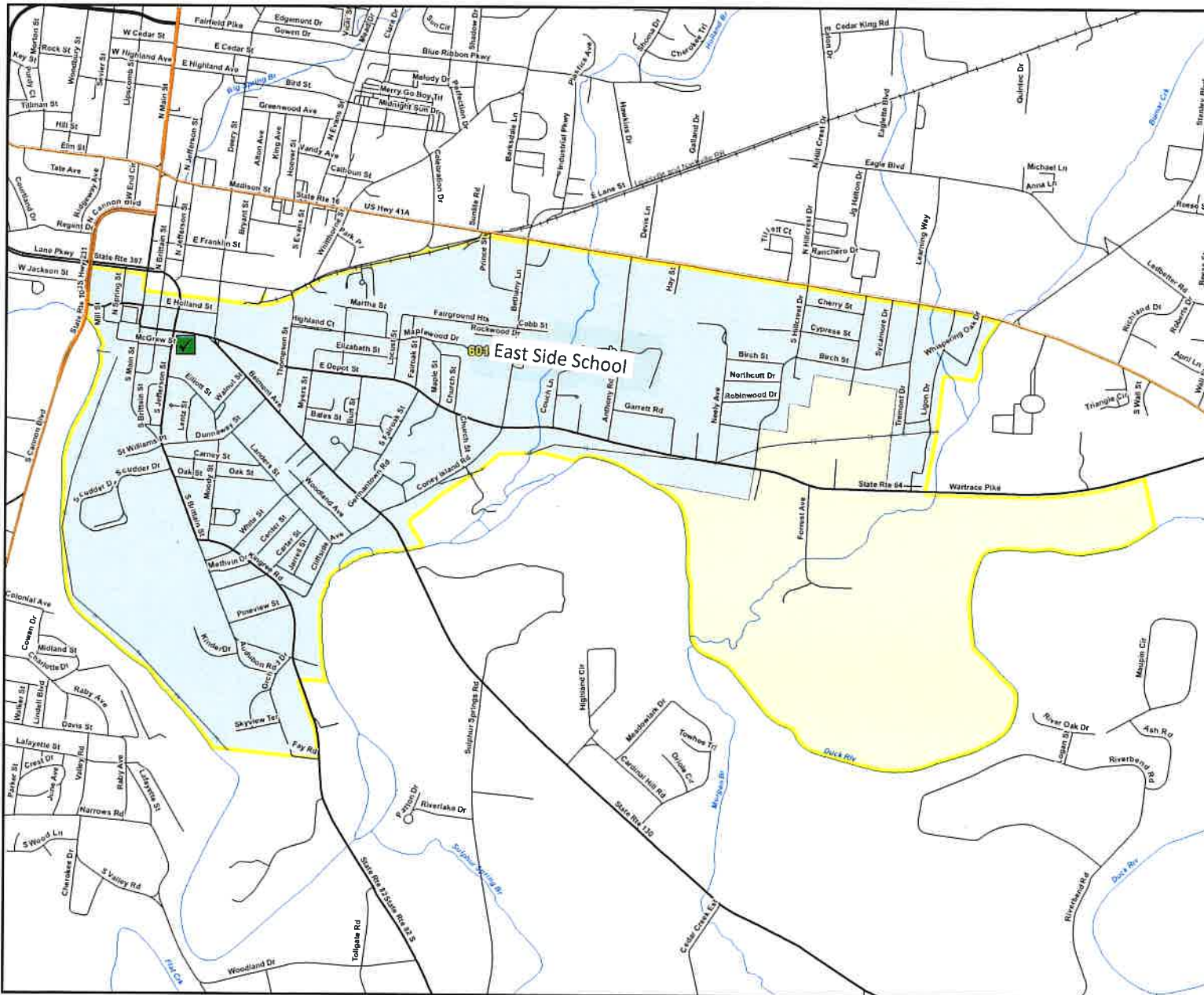
## Bedford County

### 605 Normandy Baptist Church Voting Precinct

TOTAL POPULATION	1,839
WHITE POPULATION	1,608
% WHITE	87.4%
BLACK POPULATION	50
% BLACK	2.7%
OTHER POPULATION	181
% OTHER	9.8%
HISPANIC POPULATION	107
% HISPANIC	5.8%
TOTAL POPULATION 18	1,478

- Polling Place
- Interstates
- U.S. Highway
- State Highway
- Local Roads
- Railroads
- Stream
- Powerlines (Incomplete)
- City, Town
- City, Town
- County



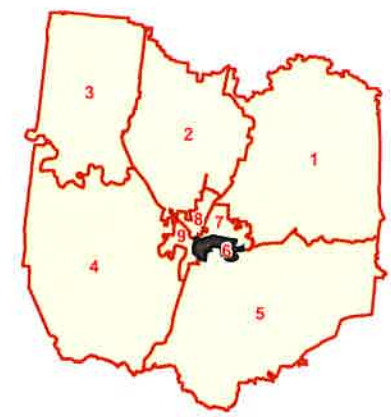


## Bedford County

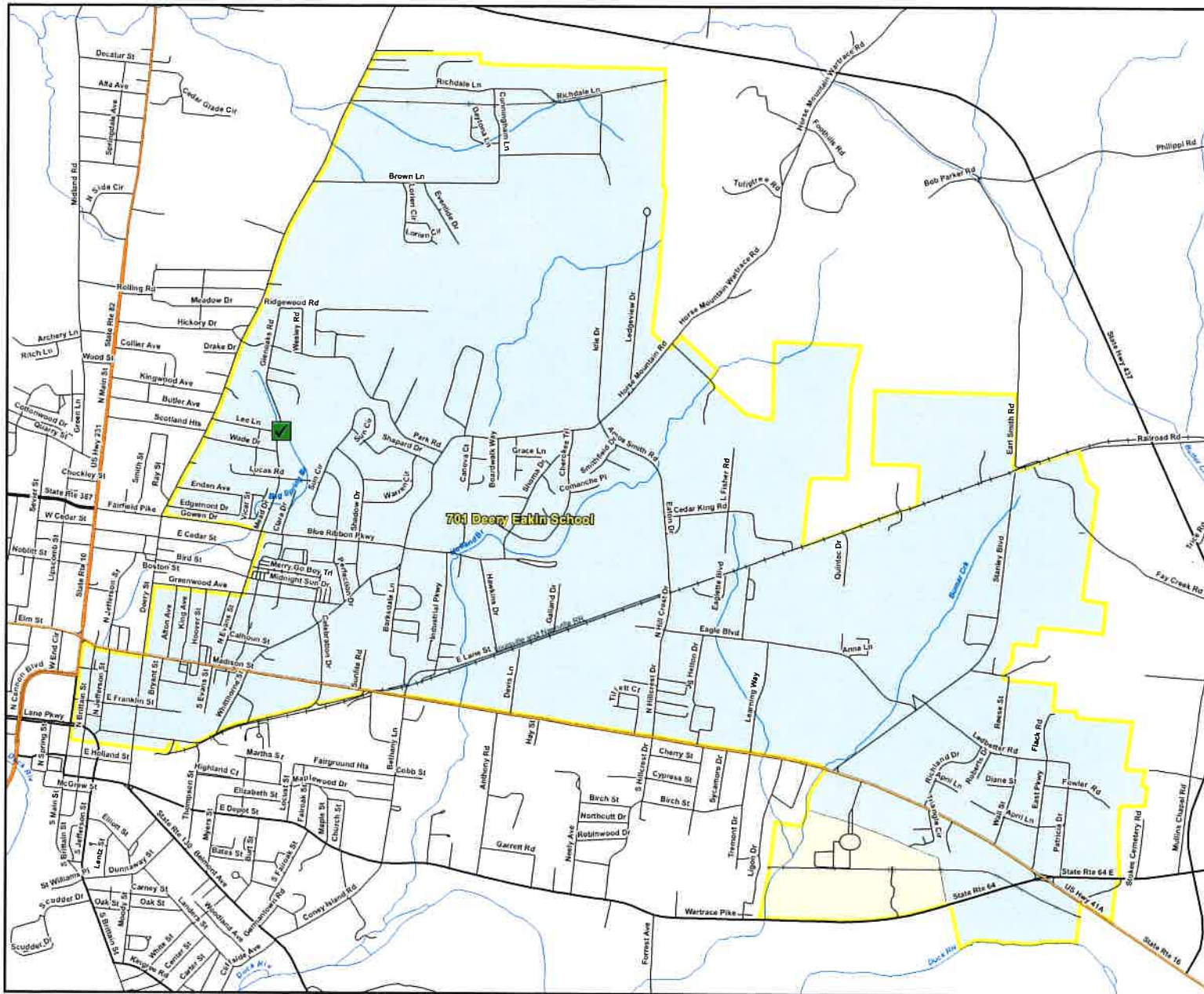
### 601 East Side School Voting Precinct

TOTAL POPULATION	5,842
WHITE POPULATION	3,429
% WHITE	58.7%
BLACK POPULATION	802
% BLACK	13.7%
OTHER POPULATION	1,611
% OTHER	27.6%
HISPANIC POPULATION	1,538
% HISPANIC	26.3%
TOTAL POPULATION 18	4,149

-  Polling Place
-  Interstate
-  U.S. Highway
-  State Highway
-  Local Roads
-  Railroads
-  Stream
-  Powerline (Incomplete)
- City, Town**
-  City, Town
-  County









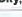


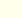




## Bedford County

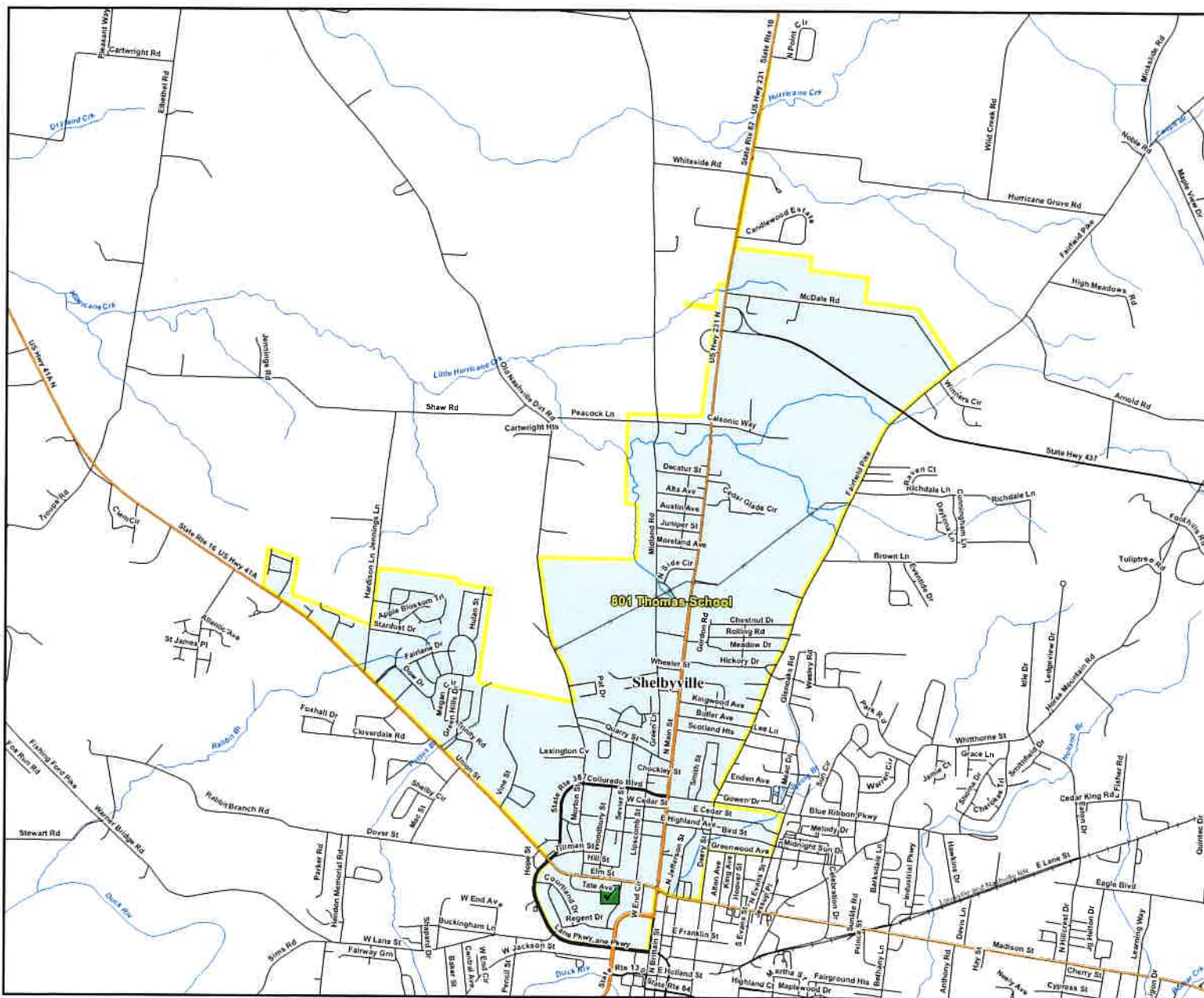
### 701 Deery Eakin School Voting Precinct

TOTAL POPULATION	5,662
WHITE POPULATION	3,531
% WHITE	62.4%
BLACK POPULATION	768
% BLACK	13.6%
OTHER POPULATION	1,363
% OTHER	24.1%
HISPANIC POPULATION	1,562
% HISPANIC	27.6%
TOTAL POPULATION 18	4,145

-  Polling Place
-  Interstates
-  U.S. Highway
-  State Highway
-  Local Roads
-  Railroads
-  Stream
-  Powerline (Incomplete)
- City, Town**
-  City, Town
-  County



Created On: 3/8/2022



## Bedford County

### 801 Thomas School Voting Precinct

TOTAL POPULATION	5,586
WHITE POPULATION	3,006
% WHITE	53.8%
BLACK POPULATION	824
% BLACK	14.8%
OTHER POPULATION	1,756
% OTHER	31.4%
HISPANIC POPULATION	1,618
% HISPANIC	29%
TOTAL POPULATION 18	3,923

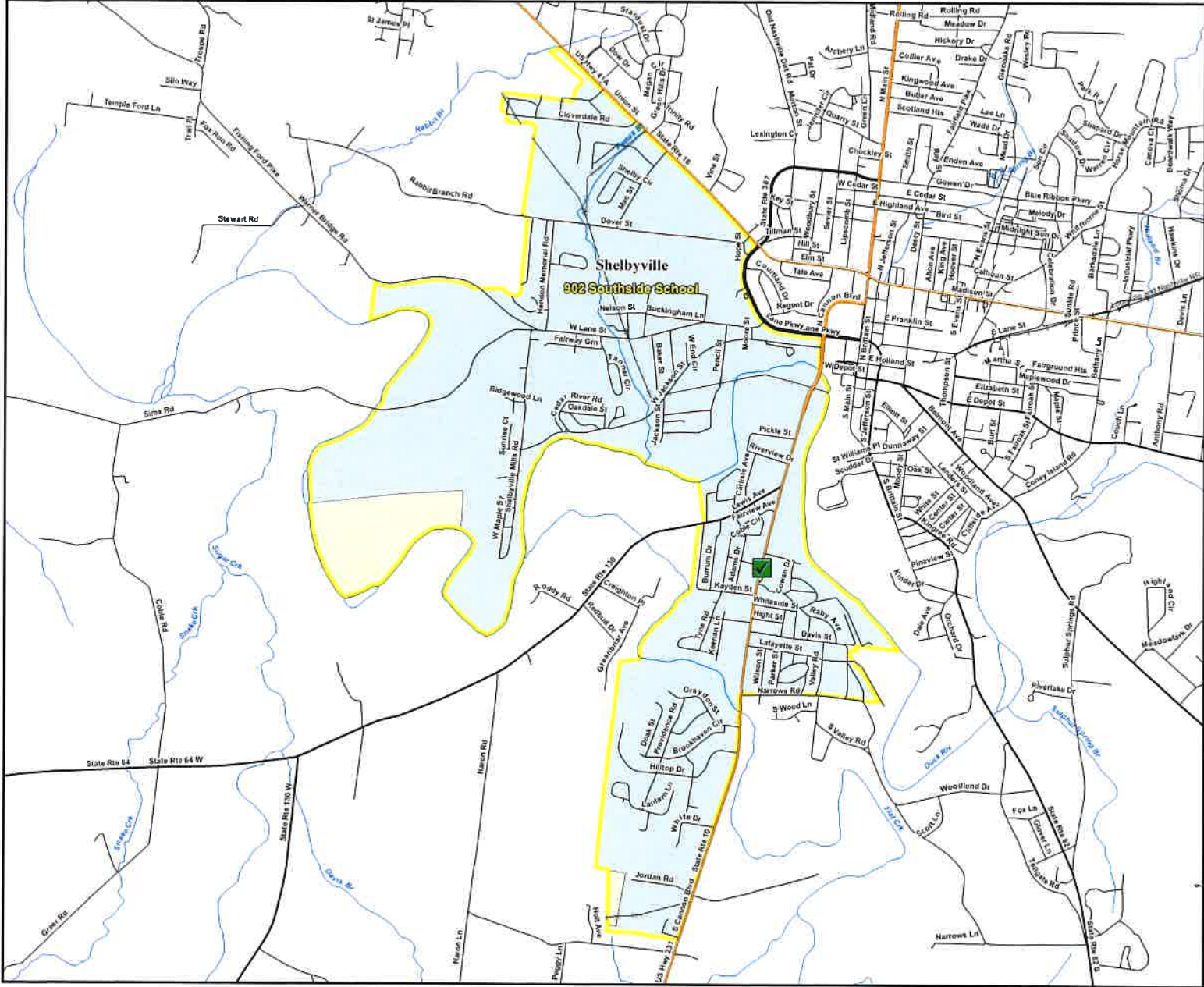
- Polling Place
- Interstates
- U.S. Highway
- State Highway
- Local Roads
- Railroads
- Stream
- Powerline (Incomplete)

#### City, Town

- City, Town
- County



Created On: 3/8/2022



## Bedford County

### 902 Southside School Voting Precinct

TOTAL POPULATION	5,705
WHITE POPULATION	3,734
% WHITE	65.5%
BLACK POPULATION	513
% BLACK	9%
OTHER POPULATION	1,458
% OTHER	25.6%
HISPANIC POPULATION	1,356
% HISPANIC	23.8%
TOTAL POPULATION 18	4,139

- Polling Place
- Interstates
- U.S. Highway
- State Highway
- Local Roads
- Railroads
- Stream
- Powerline (Incomplete)
- City, Town
  - City, Town
  - County

