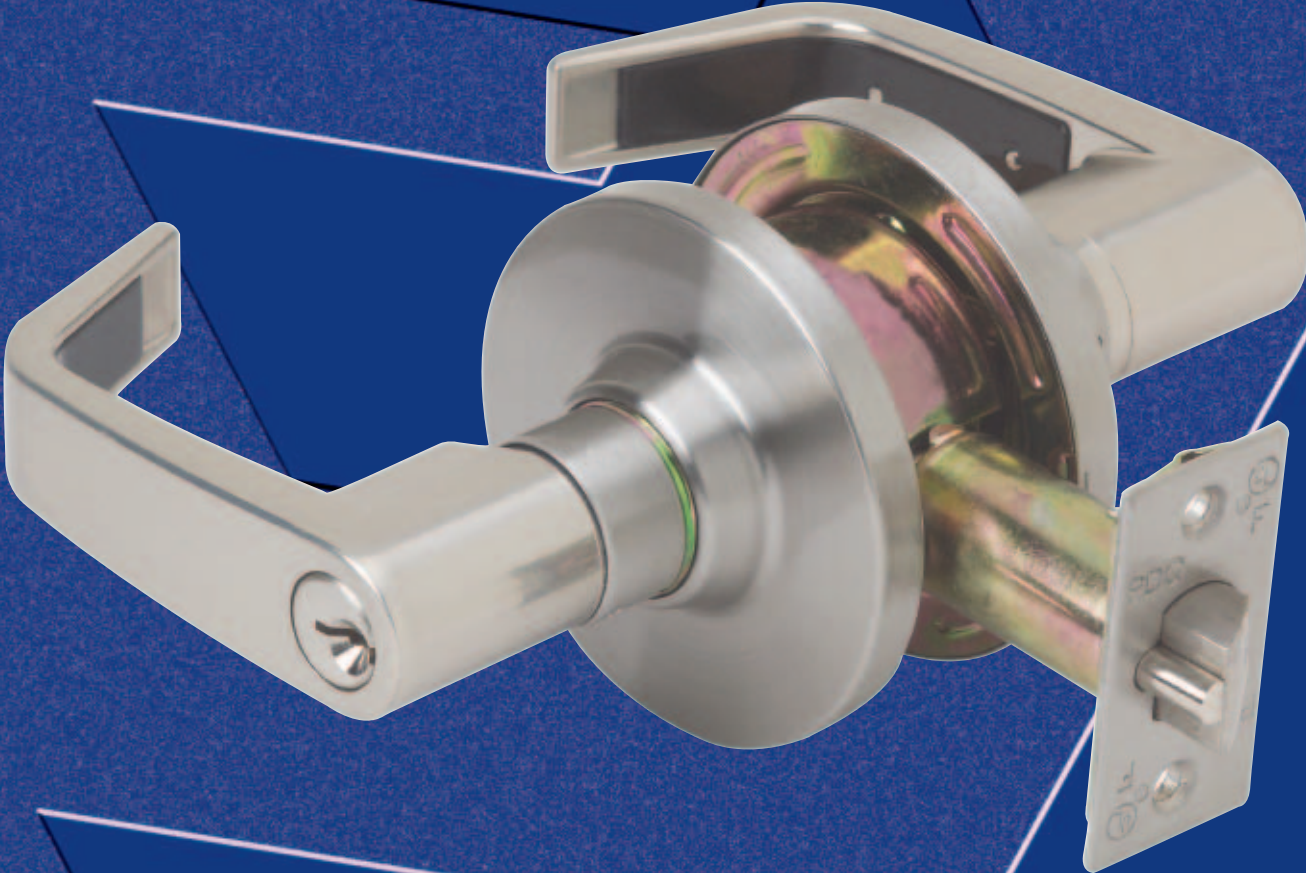


SW Series

Commercial Locks



SW SERIES COMMERCIAL GRADE 2 CYLINDRICAL

SUGGESTED ARCHITECTURAL SPECIFICATIONS

Lockset will be SW Series from PDQ Industries, Inc., Leola, Pennsylvania. Lock will be U.L./U.L.C. Listed with a one-year manufacturer's limited warranty. Lock shall fit type 160 or 161 door

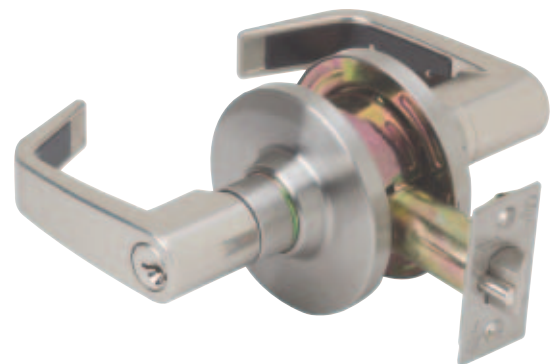
preparation. Lockset to be fully adjustable for 1-3/8" to 1-3/4" door thickness. Lock will accommodate keyways of major manufacturers.

SPECIFICATIONS – SW Series

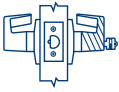

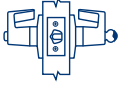
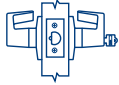



FOR DOORS:	1-3/8" to 1-3/4" thick.
DOOR PREP:	Fits standard 160 or 161 door prep.
BACKSET:	2-3/8" or 2-3/4".
FRONT:	2-1/4" x 1 for 2-3/8" backset. 2-1/4" x 1-1/8" for 2-3/4" backset. Stainless steel or wrought brass
STRIKE:	4-7/8" x 1-1/4" (ASA). "T" or "FL" Strike optional.
LATCHBOLT:	1/2" throw. Adjustable front for flat or beveled doors.
HAND:	Non-handed.
TRIM:	Zinc diecast levers / wrought brass rose.
KEYS:	Two (2) change keys per lock.
KEYWAYS:	SCC standard / also available in keyways of other manufacturers.
CYLINDER:	Brass 6-pin insert cylinder.
KEYING:	Can be MK, CMK, GMK or CK. Available Zero Bitted (K0), Keyed Different (KD), Keyed Alike (KA). Can be keyed into masterkey systems of other manufacturers.
FINISHES:	*US3 (605), US4 (606), US10B (613), US26D (626).
CERTIFICATIONS:	► Meets all accessibility requirements of the ADA. ► U.L./U.L.C. Listed.
WARRANTY:	One-year Limited Warranty.

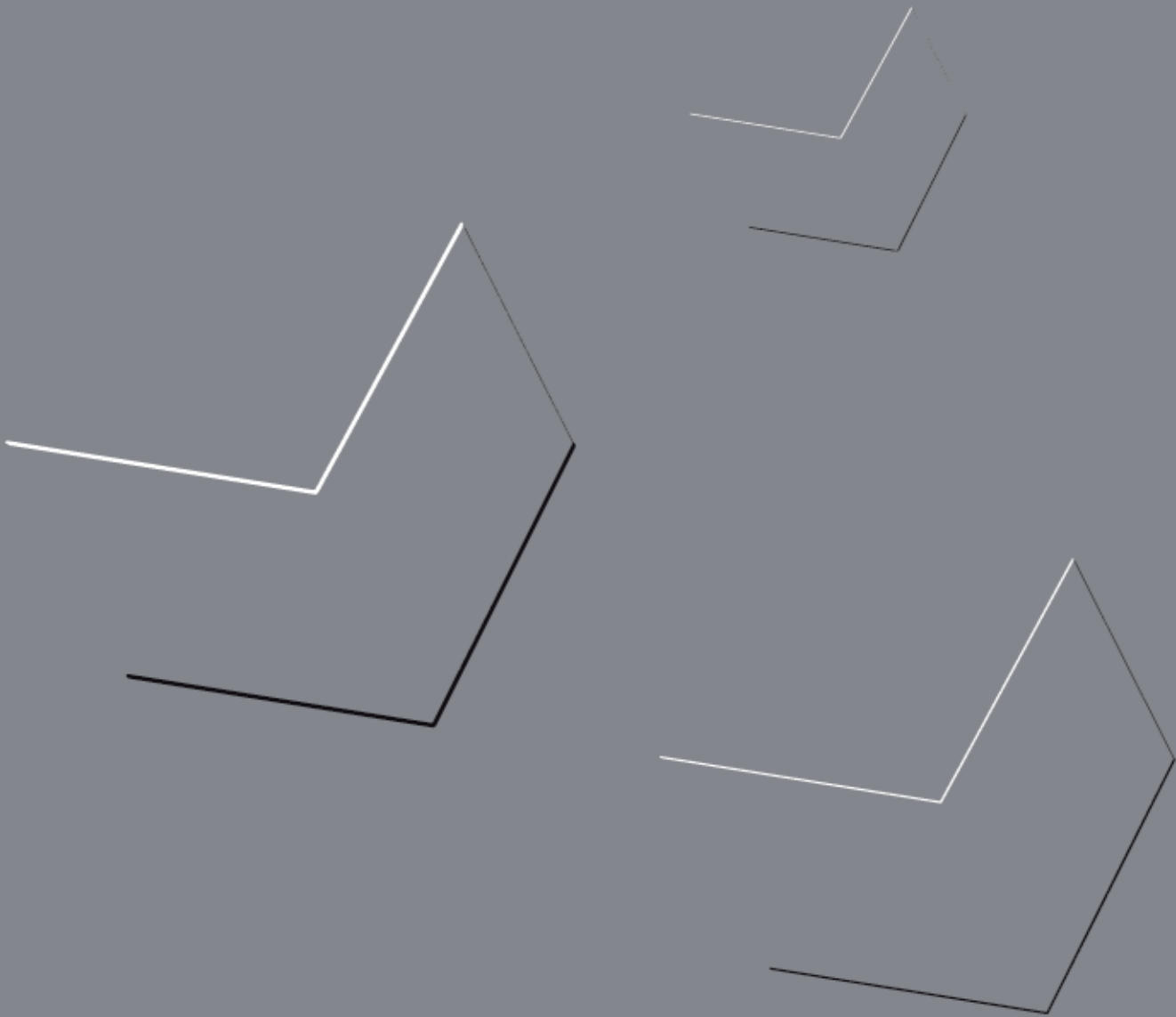
*Available by special order.

SW SERIES WITH PATRIOT (PAT) LEVER



SW SERIES COMMERCIAL GRADE 2 FUNCTION CHART

FUNCTION	FUNCTION NO.	INSIDE	OUTSIDE	FUNCTION DESCRIPTION	ANSI NO.
Storeroom	SW 115			<ul style="list-style-type: none"> Latchbolt operated from outside by key, inside by lever Outside lever always fixed Inside lever always free Deadlocking (guarded) latchbolt 	F86
Communicating	SW 125			<ul style="list-style-type: none"> Latchbolt operated by inside lever Blank plate outside Minimum clearance of 1-1/2" between doors required Deadlocking (guarded) latchbolt 	
Entry	SW 182			<ul style="list-style-type: none"> Latchbolt operated by lever from either side or key in outside lever Outside lever locked by push button from inside Outside unlocked by key from outside, or rotating inside lever Deadlocking (guarded) latchbolt 	F82
Classroom	SW 148			<ul style="list-style-type: none"> Latchbolt operated by lever from either side Outside lever locked or unlocked by key from outside Inside lever always operates latch Deadlocking (guarded) latchbolt 	F84
Passage	SW 126			<ul style="list-style-type: none"> Latchbolt operated by lever from either side at all times 	F75
Privacy Bedroom Bathroom	SW 176			<ul style="list-style-type: none"> Latchbolt operated by lever from either side Outside lever locked by push button on inside Unlocked by emergency release from outside, rotating inside lever or closing door 	F76
Single Dummy	SW 211			<ul style="list-style-type: none"> Pull lever one side No mechanical operation 	



PO Box 507 2754 Creek Hill Road Leola PA 17540

800 441 9692

717 656 4281

717 656 6892 Fax

www.pdqlocks.com