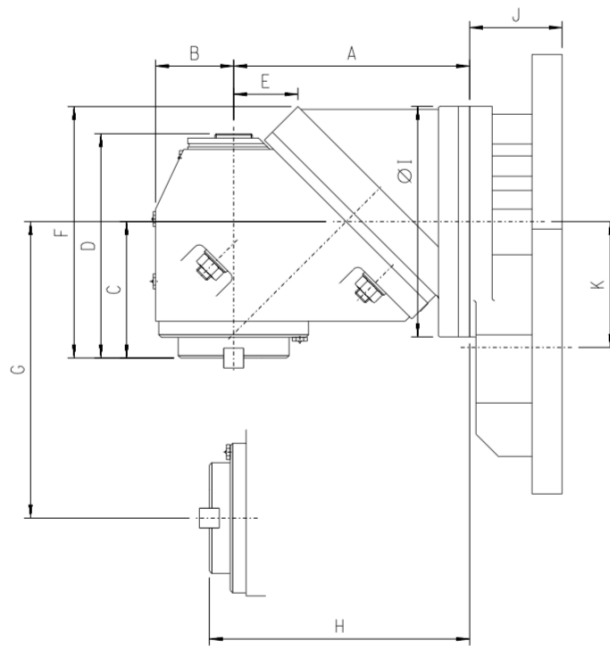


V-Series multi-angular head



MODELO	ISO	HP CV	MAX. RPM	A	B	C	D	E	F	G	H	ØI	J	K	PESO
V-0	40	5	1800	190,5	62,5	109,5	180	46,5	197	91,5	208,5	185		101	32
V-1	40	7,5	1800	231,5	75	131,5	211	57,5	246,5	105,5	257,5	230		118,08	55
V-2	40	10	1800	278	87	153	260	69	273,5	130	301	265		135	82
V-2	50	10	1800	278	87	149	263	69	269,5	130	297	265		140,2	82
V-3	40	20	1800	319,5	92,5	169	281	58,5	304	144,5	344	306			120
V-3	50	20	1800	319,5	92,5	169	285	58,5	304	144,5	344	306		150	120
V-4	50	30	3000	359	102,5	188	324	93	323	173	374	306			140
V-5	50	35	3000	417	108,5	266,25	341,5	161	418,25	236	447,25	380			260
V-7	50	60	2000	460	120	253	435	109	438	214	499	410			380

Important note

- ▶ All dimensions are given in millimetres.
- ▶ The "J" measurement is always defined by the dimensions of the machine coupling.
- ▶ The weight refers to the headstock without coupling base.